



Model 1111E/1112E



Doc: CH-1111E/01

Nov 2006

Air operated economy 2 way brass ball valve with kit

Full bore 2 way nickel plated economy brass ball valve, designed for automation with integrally cast ISO5211 actuator mounting platform, fitted via stainless steel mounting kit with CH-air 'A' type pneumatic actuator. Supplied assembled and dry bench function tested. Minimum of 80 psi (5.5 bar) air supply pressure to the actuator is required.

1111E With double acting actuator

1112E With spring return actuator

Full size range from 1/4" to 3".

Applications:

Water, oil and most non-corrosive media, subject to compatibility with wetted parts in contact with media. Actuators sized on a maximum differential pressure of 10 bar wet service, if the intended duty is above this differential, or dry (air or gas) call to check actuator sizing as a larger output actuator may be required.

Maximum working temperature of assembly is +120C. If the intended duty is at a higher temperature than this, select a stainless steel valve-contact us for options.

Valve Specifications:

Body	Nickel plated brass
Ball	Nickel plated brass
Seats	PTFE
Pressure rating	UTI 1" 40 bar, rest 25 bar
Valve temp limits	-20 to +150°C
Actuator temp limits	-20 to + 70°C

Accessories:

Solenoid control:

This provides electrical control of the valve. The air is constantly supplied to the solenoid which in turn controls the air to and from the actuator. The solenoid direct mounts to the actuator using the actuator's Namur connection.

Position Confirmation:

Remote end of travel confirmation can be provided by adding a top mounted limit switch box. A variety of switch options and housings are available. See our LSB range for details.

Position control:

The standard on/ off function can be converted to modulating function, using either a 3-15psi or 4-20mA control signal, by adding a pneumatic or electro-pneumatic positioner. See our YT range for details.



Quick guide to the CH-air A Type actuator standard features :

Robust rack and pinion construction

High accuracy machining of components

ATEX Ex II 2 GD approved for use in hazardous areas

CE Approved

Guaranteed for 1,000,000 cycles

Balanced air & spring strokes in spring return version

Safe to dismantle for routine maintenance

Compliant with all actuator standards

Accessories are easy to mount

Hard anodised aluminium body

ENP coated option (Extra cost)

Teflon® coated option (Extra cost)

Stainless steel version (Extra cost)



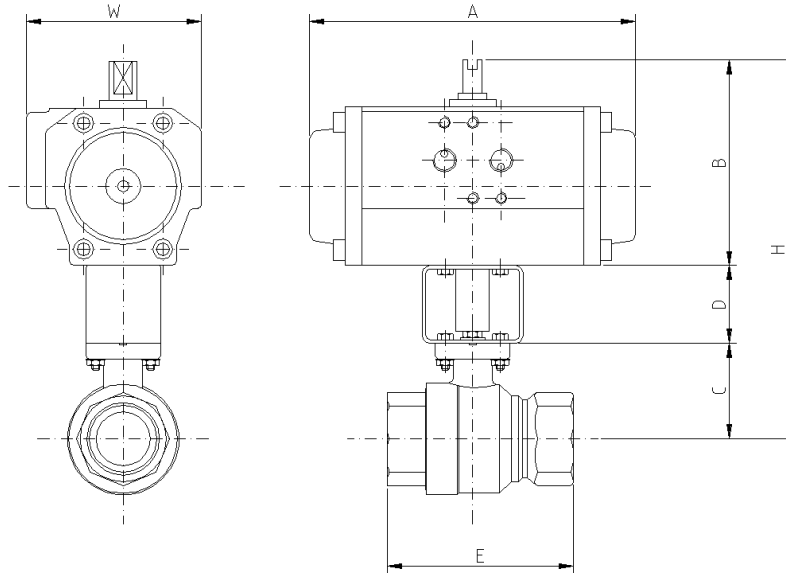
Model IIIIE/III2E



Doc: CH-IIIIE/01

Nov 2006

Air operated economy 2 way brass ball valve with kit- Dimensions (to nearest mm)



Double Acting										
	Model	A	B	C	D	E	H	W	Kilos	Kv
1/4"	CH032	117	65	29	50	65	144	48	1.0	16.3
3/8"	CH032	117	65	29	50	65	144	48	1.0	16.3
1/2"	CH032	117	65	29	50	65	144	48	1.0	16.3
3/4"	CH032	117	65	32	50	75	147	48	1.0	29.5
1"	CH042	160	77	36	50	86	163	61	1.8	43.0
1 1/4"	CH050	138	87	41	50	95	178	75	2.3	89.0
1 1/2"	CH063	156	103	57	50	101	210	86	3.1	230.0
2"	CH063	156	103	64	50	121	217	86	4.2	265.0
2 1/2"	CH075	210	120	90	50	165	260	94	7.2	540.0
3"	CH075	210	120	100	50	188	270	94	9.3	873.0
Spring Return										
1/4"	CH042SR	160	77	29	50	65	156	61	1.5	16.3
3/8"	CH042SR	160	77	29	50	65	156	61	1.5	16.3
1/2"	CH042SR	160	77	29	50	65	156	61	1.5	16.3
3/4"	CH050SR	138	87	32	50	75	169	75	1.8	29.5
1"	CH050SR	138	87	36	50	86	173	75	2.1	43.0
1 1/4"	CH063SR	156	103	41	50	95	194	86	3.1	59.0
1 1/2"	CH075SR	210	120	57	50	101	227	94	4.2	230.0
2"	CH075SR	210	120	64	50	121	234	94	5.2	265.0
2 1/2"	CH085SR	228	130	90	50	165	270	104	9.0	540.0
3"	CH085SR	228	130	100	50	188	280	104	11.1	873.0

Kv is in m³/hr, based on water at ambient temperature with a 1 bar pressure drop across the valve

Subject to alteration without notice. Uncontrolled copy, not subject to automatic updates